

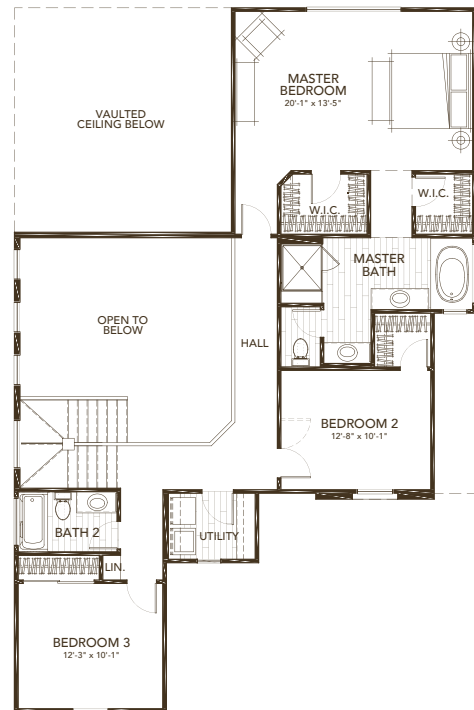
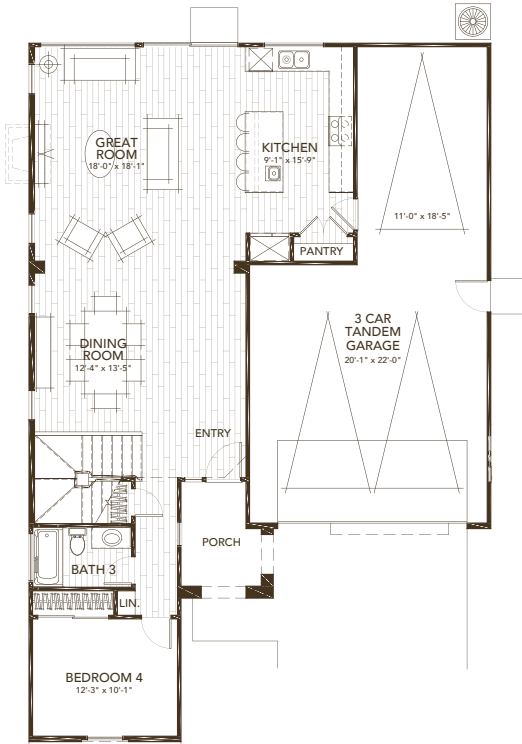
LOT 205 | POPPY

MILL VALLEY ELEVATION

4 BEDROOM | 3 BATH | 3 CAR TANDEM GARAGE | 2,254 SQFT

MILL VALLEY RANCH 2 COLOR SCHEME

	Body: Malibu Beige
	Trim: Acoustic White
	Accent: Saltfilla
	Roofing: Hickory



WILDFLOWER IONE, CALIFORNIA

SALES CONTACT: MICHAEL MARKS (916) 952.8518

BRE Broker #00978257